

## Which Type?

Ambu differentiates its range of electrodes based on the type of backing material (breathable or occlusive), the type of gel (wet gel or solid gel), style of connector (stud, wired, slot, tab, radio-translucent etc.), adhesive (high-tack, normal tack, sensitive) and size.

## Short Term or Long Term

When choosing an electrode for purchase, we recommend taking these features into account. For example, the clinician should consider the wear-time of the electrode and determine whether they would be better off selecting a short-term or long-term style based on the clinical area of use, e.g. simple monitoring (short-term) or holter monitoring (long-term).

## Wet Gel or Solid Gel

Similarly, Ambu recommends considering the respective benefits of wet gel (best suited for diagnostic use) and solid gel (better suited for general monitoring use) to determine the best fit for an organisation: a diagnostic style wet gel can be used for monitoring but a solid gel monitoring electrode may not give an optimal diagnostic result.

## Best Trace, First Trace

Correct electrode choice enables clinicians to achieve 'best trace, first trace' with less time spent on trouble-shooting artifact issues, fewer repeat tests and less waste of clinical time. This provides cost benefit efficiencies that may not necessarily be realised simply by selecting the cheapest electrode available.



## WhiteSensor

The flexible, reliable and price optimised range of Ambu® electrodes

## WhiteSensor

### Functionality at lower costs

Responding to the growing demands of standard solutions to cover a broader range of applications, WhiteSensor has been developed as a range of electrodes that unites price optimisation with the well-known Ambu® quality and functionality.

#### Ambu® White Sensor WS

- Highly conductive solid gel
- Strong adhesion
- Flexible foam backing
- Standard centre stud connection



BIOAMWSOOS

Pkt/50 \$10.08

12+ \$9.10

#### White Sensor 4831Q

Adult and paediatric short term foam monitoring electrode, with Bio-Tack™ gel.



BIO4831Q

Pkt/60 \$12.15

5+ \$11.34

#### White Sensor 4560

Adult size butterfly shaped wet gel PE foam based electrode. Features a very strong adhesive specially designed for monitoring of sweaty patients and stress testing.



BIO4560

Pkt/60 \$16.50

5+ \$15.40



#### White Sensor 0415M

- Solid gel tab electrode
- Latex free
- PVC free (in contact with skin)
- Fish tail tab design reducing electrode lift-offs
- 34L x 23W mm

BIO0415M

Pkt/100 \$11.14

10+ \$9.80



#### White Sensor 0615M

This solid gel electrode features a centre clip connection and a functional shape that minimises electrode twist and peel.

- Latex free
- 37L x 26W mm

BIO0615M

Pkt/100 \$13.50

5+ \$12.60



# BlueSensor

The world's most time and cost efficient electrode

## Exact monitoring - clear picture

The BlueSensor electrodes give a fast and reliable trace without the need for skin preparation, maximising comfort for the patient. Fast, exact monitoring that ensures a clear picture of the patients' heartbeat is essential to accurate diagnoses. BlueSensor electrodes will give you exactly that – an absolute quality experience.

### Ambu Blue Sensor M



M-00-A; 4mm fitting  
M-00-F; 3mm fitting

M-00-S; Stud

The small Ambu Blue Sensor M features highly conductive wet gel and superior adhesion to ensure optimal signal quality during short to medium term applications. Thanks to the special occlusive backing material, the electrode will not absorb liquids.

- Highly conductive wet gel
- Superior adhesion
- Occlusive backing material
- Ideal for resting ECG

size 40.8L x 34W mm

<b>M-00-A 4mm</b>	<b>BIOAMMOOA</b>	Pkt/50	<b>\$19.75</b>	20+	<b>\$17.00</b>
<b>M-00-F 3mm</b>	<b>BIOAMMOOF</b>	Pkt/50	<b>\$19.75</b>	20+	<b>\$16.80</b>
<b>M-00-S stud</b>	<b>BIOAMMOOS</b>	Pkt/50	<b>\$18.25</b>	20+	<b>\$16.50</b>

### Ambu Blue Sensor L

- Highly conductive wet gel
- Combination of instant and long-term adhesives for excellent contact
- Breathable microporous material
- Comfortable to wear, ideal for long-term monitoring



**L-00-S stud**  
**BIOAML00S**

Pkt/25 **\$11.95**  
20+ **\$10.85**

size 68.2L x 55W mm

### Ambu Blue Sensor SP

- Highly conductive wet gel
- Superior adhesion
- Comfortable foam backing; gentle to skin
- Unique offset concept
- Ideal for short-term stress testing



**SP-00-S stud**  
**BIOAMSP00S**

Pkt/50 **\$19.60**  
20+ **\$16.54**

size 42.5L x 38W mm

### Ambu Blue Sensor T

- Highly conductive wet gel
- Superior adhesion
- Oblong shape permits the placement of six closely spaced electrodes
- Comfortable foam backing; gentle to skin
- Large measuring area

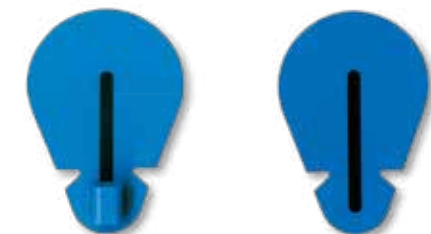


**T-00-S stud**  
**BIOAMT00S**

Pkt/25 **\$11.95**  
20+ **\$10.75**

size 57L x 35W mm

### Ambu Blue Sensor SU



SU-00-A; 4mm fitting  
SU-00-F; 3mm fitting

SU-00-C; Clip  
size 49L x 33W mm

### The Ambu Blue Sensor SU is the world's first tab electrode featuring a wet gel.

The combination of wet gel and superior quick adhesion provides optimal signal quality during 12-lead diagnostic resting applications. Ten SU electrodes are packed on a single liner so there is no need to peel off individual backing material. Thanks to the special occlusive backing material, the electrode will not absorb liquids.

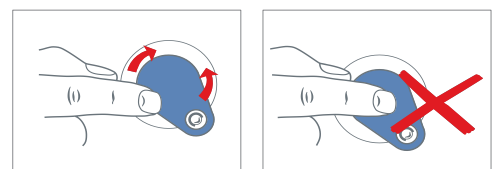
- Highly conductive wet gel
- Superior quick adhesion
- Ten electrodes on a single liner



<b>SU-00-A 4mm</b>	<b>BIOAMSU00A</b>	Pkt/60	<b>\$15.44</b>	10+	<b>\$13.72</b>
<b>SU-00-F 3mm</b>	<b>BIOAMSU00F</b>	Pkt/60	<b>\$14.95</b>	10+	<b>\$13.25</b>
<b>SU-00-C tab</b>	<b>BIOAMSU00C</b>	Pkt/100	<b>\$13.50</b>	10+	<b>\$12.15</b>

### How to place your Electrodes?

Run a finger around the outside of each electrode without touching its centre thus preventing the gel from spreading onto the adhesive area and ensuring that the electrode stays in place





### 3M™ Red Dot™ Monitoring Electrode with Foam Tape and Sticky Gel

- Utilises an advanced, high performance conductive adhesive technology for long, secure wear
- Ideal for long term monitoring (can stay in place for 5 days)
- The high adhesion foam backing makes it ideally suited for stress testing
- Size 4cm x 3.5cm

3M2560 Pkt/50 \$15.66 10+ \$13.72



### 3M™ Red Dot™ Micropore™ Monitoring Electrodes

- Micropore tape backing is gentle to the skin for increased patient comfort
- Ideal for long term monitoring (can stay in place for 3 days)
- Solid gel electrode conforms to the skin quickly allowing high quality, uninterrupted traces
- Size 6cm diameter

3M2239 Pkt/50 \$17.75 10+ \$15.54



### 3M™ Red Dot™ Soft Cloth Monitoring Electrodes

- Round-style, soft-cloth electrode designed for general or long-term clinical situations
- Sontara™ Tape backing that is comfortable, breathable, flexible and gentle to skin
- Solid gel electrode
- Size 6cm diameter

3M2238 Pkt/50 \$17.45 10+ \$15.25



### 3M™ Red Dot™ Resting ECG Electrode 2330

- 2cm x 2cm Resting ECG Electrode
- Use with Alligator/Universal Clips

3M2330 Pkt/100 \$15.24 10+ \$13.35



## Defibrillator Pads



Zoll	Adult	ZOL890008000	Each
Zoll	Paediatric	ZOL8900081	Pkt/2
Ipad	Adult	BIOCUA0512	Pkt/2
IPad	Paediatric	BIOCUA0512P	Pkt/2
CUER1 & 2	Adult	BIOCUA5080	Pkt/2
CUER1 & 2	Paediatric	BIOCUA0711	Pkt/2
Heartstart FR2	Adult	LAEDP1	Pkt/2
Heartstart FR2	Paediatric	LAEM3870A	Pkt/2
Heartstart First Aid	Adult	LAEM5071A	Pkt/2
Heartstart First Aid	Paediatric	LAEM5072A	Pkt/2
Powerheart AED	Adult	CDS9131	Pkt/2
Powerheart AED	Paediatric	CDS9730	Each
3M Defib pads	11 x 15cm	3M2346	Pkt/2

## ECG universal clip

- Locks on to tab electrode
- Snap and lock overstud
- Fits 3 and 4mm pins
- Holds electrodes flat
- High quality tracing

Pkt/12 \$49.95 BIOECGLIP



## 3M™ Red Dot™ Trace Prep

To abrade the skin prior to applying electrode to improve trace quality

18mm x 5m

3M2236 \$14.75



## ECG Paper

### EDAN

SE601	110mm Z-fold	Pkt/140	ECGPAP125	\$16.95
SE1200	210mm Z-fold	Pkt/150	ECGPAP126	\$19.65
SE1200	210mm	roll	ECGPAP127	\$13.50

### Cardioline AR series

AR600	60mm	roll	ECGPAP160	\$8.45
AR1200	120mm Z-fold	Pkt/300	ECGPAP130	\$15.95
AR2100	210mm	roll	ECGPAP140	\$27.95

### Cardioline DELTA series

DELTA 1	60mm	roll	ECGPAP180	\$5.95
DELTA 3	112mm Z-fold	Pkt/300	ECGPAP190	\$12.95
DELTA 60	210mm	roll	ECGPAP200	\$27.95

### Fukuda

FUKUDA	63mm x 30m	roll	ECGPAP260	\$6.95
FUKUDA	145mm x 75m	roll	ECGPAP250	\$18.50

### Mortara

ELI50	50 x 70mm Z-fold	Pkt/260	ECGPAP280	\$9.35
ELI100	108mm x 25m	roll	ECGPAP270	\$14.25
ELI250	210 x 300mm Z-fold	Pkt/250	ECGPAP300	\$29.40

### Schiller

AT-1	90mm Z-fold	Pkt/400	ECGPAP290	\$14.95
AT-2	210mm Z-fold	Pkt/173	ECGPAP291	\$29.70

### Welch Allyn

CP100/CP200	90mm Z-fold	Pkt/200	ECGPAP290	\$34.10
-------------	-------------	---------	-----------	---------



## Spirometer Paper

Paper for Pony Graphic 57mm	Roll	SPIPAP510	\$5.25
Paper for Fukuda ST75 58mm	Roll	SPIPAP520	\$15.39
Paper for Microlab 112mm	Roll	SPIPAP530	\$12.50
Paper for Pony FX 112mm	Roll	SPIPAP550	\$9.34
Paper for Vitalograph Alpha	Roll	SPIPAP560	\$35.10
Paper for Spirolab 110mm	Roll	SPIPAP590	\$10.35
Paper for Welch Allyn 110mm x 30m	Roll	SPIPAP595	\$10.88

## Printer Ribbon

Printer Ribbon ERC-09	Each	DHTERC09	\$12.85
-----------------------	------	----------	---------

